

Bookcase Light

L4202

The Bookcase Lights are fabricated from sheet brass with a fixed or articulated arm to illuminate library shelves.

UK / EU Version

Depth: 270mm / 10.5" Extending to 400mm / 15.75"
Height: 310mm / 12.25" - Extending to 500mm / 19.5"
Width: 305mm / 12"

Finishes: Polished Brass, Antiqued Brass, Silvered Brass

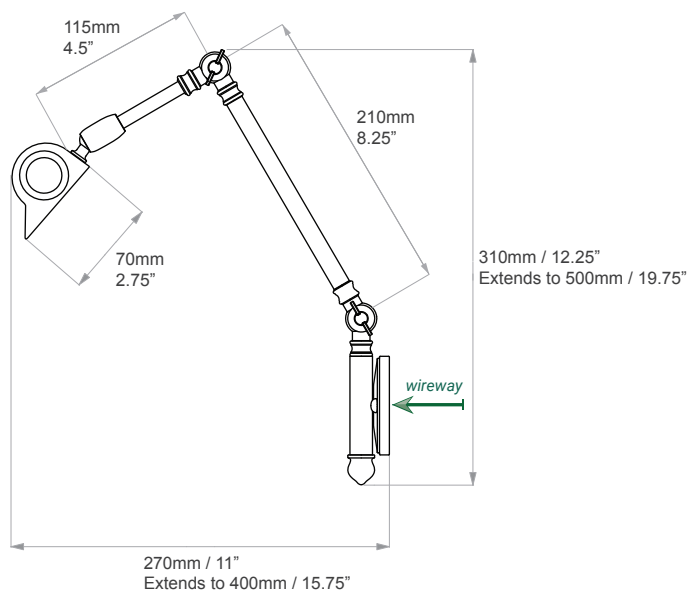
Weight: 3kg
Material: Brass
Shade: 6", 9", 12" sized options

Certification: BSEN 60598
IP Rated: N/A

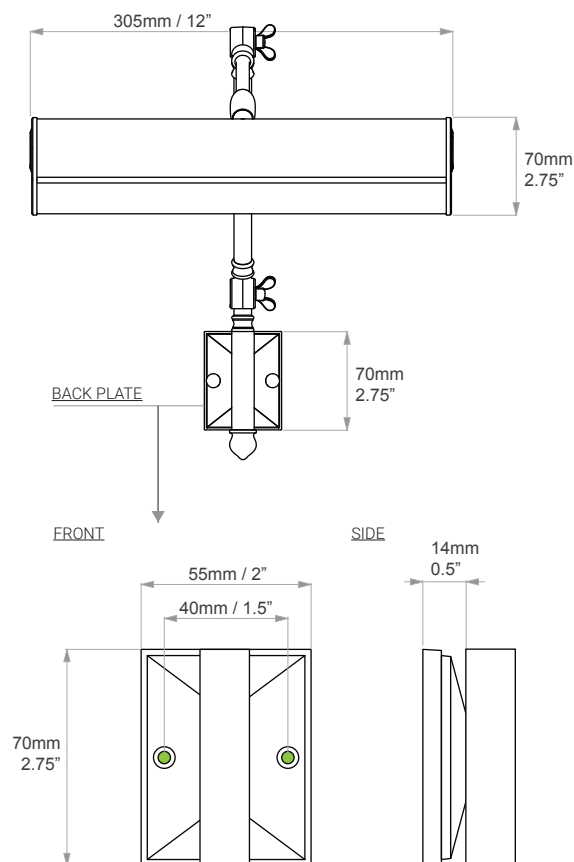
Lamp Holder: x 2 B22 (UK), SES E14 (EU)
Input Voltage: 230V
Bulb: x 2 B22 candle (UK), SES E14 candle (EU)
Bulb Wattage: 25w max recommended

Additional Info: Lamps can be wired for the UK, Europe or USA.
 Measurements given are approximate. All metalwork items are bespoke and hand coloured. This means that each piece is individual and that it will continue to age over time.

SIDE



FRONT



Bookcase Light

L4202

The Bookcase Lights are fabricated from sheet brass with a fixed or articulated arm to illuminate library shelves.

US Version

Depth: 280mm / 11" *extending to* 410mm / 16"
Height: 355mm / 14" *extending to* 540mm / 21.25"
Width: 305mm / 12"

Finishes: Polished Brass, Antiqued Brass, Silvered Brass

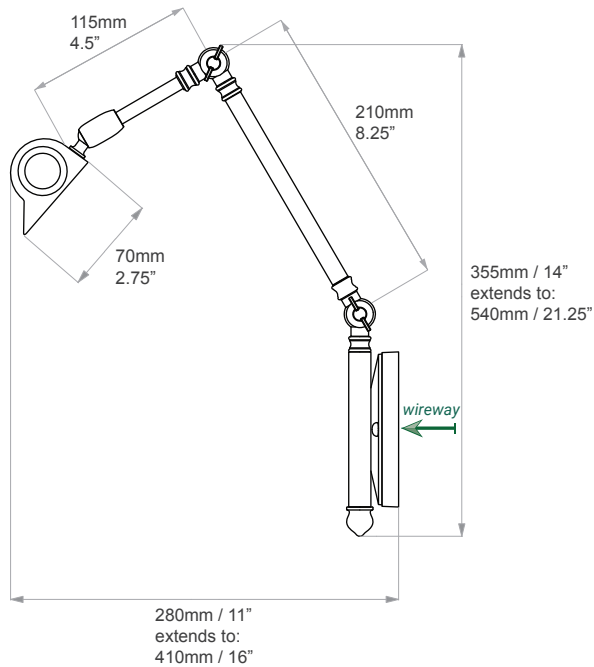
Weight: 3kg
Material: Brass
Shade: 6", 9", 12" sized options

Certification: BSEN 60598
IP Rated: N/A

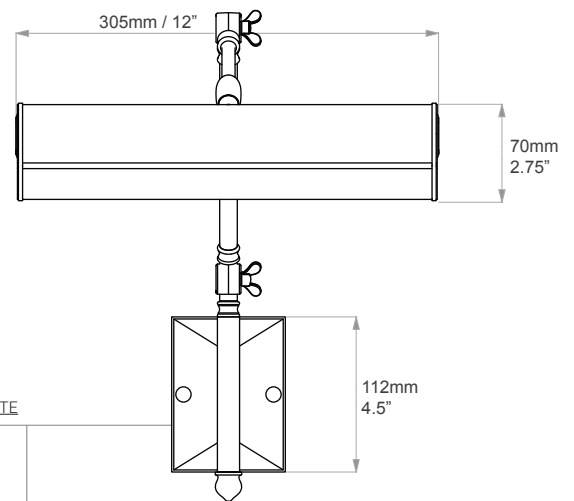
Lamp Holder: x 2 E12
Input Voltage: 110v
Bulb: x 2 E12 Candelabra
Bulb Wattage: 25w max recommended

Additional Info: Lamps can be wired for the UK, Europe or USA.
 Measurements given are approximate. All metalwork items are bespoke and hand coloured. This means that each piece is individual and that it will continue to age over time.

SIDE



FRONT



BACK PLATE

FRONT

SIDE

